



➔ **Product Type**
Miniature Rocker Switches

➔ **Product Series**
622/632-Series

➔ **Description**

The 622/632-Series miniature rocker switches are nonilluminated or illuminated and are available in single or double pole configurations. These switches provide 100 amp inrush capability. They fit into industry standard cutout dimensions, and include a quick-make contact mechanism. Other features include a small, shallow base, a contemporary actuator design and availability of a single pole circuit with an independent lamp. These switches are offered in a single throw and maintained circuit. They come in a variety of rocker colors, terminations, lamp voltages and legend options.

Certifications	UL CSA
Number of Poles	1 & 2 pole
Ratings	10A 250VAC 16A 125VAC 12A 8A 250VAC 1/2HP 125VAC 1/2HP
Dielectric Strength	1,500 V RMS (minimum)

Insulation Resistance	50 megohms (minimum)
Base Material	Polysulfone Flammability Rating - UL 94 V-0
Actuator Style	Solid Color Rocker Translucent Solid Color Rocker
Actuator Material	Polycarbonate
Terminal Options	Solder Lugs .187 QC Tabs
Mounting Method	Snap-In
Mounting Hole Dimensions	.508" x .756"; 12.9mm x 19.2mm
Value Added	Custom colors and legends available LED's Wire leads with connectors

622/632-Series Miniature Rocker Switches



A high powered offering packed into a compact sized envelope, the 622/632-Series is a staple of the Appliance, Food Service, Transportation, and General Purpose markets. The silver-alloy butt contacts will handle inrush spikes up to 125 amps and steady state current to 16A 125VAC. The lighted 632-Series features a multitude of illumination circuit options available with LED, incandescent and neon style lamps.

Dielectric Strength

UL/CSA: 1000V - live to dead metal parts & opposite polarity

Electrical Life

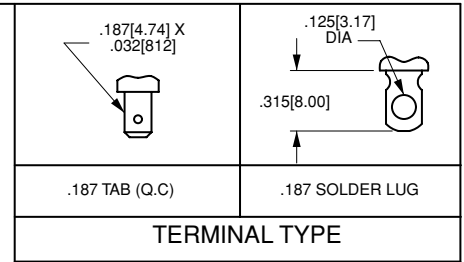
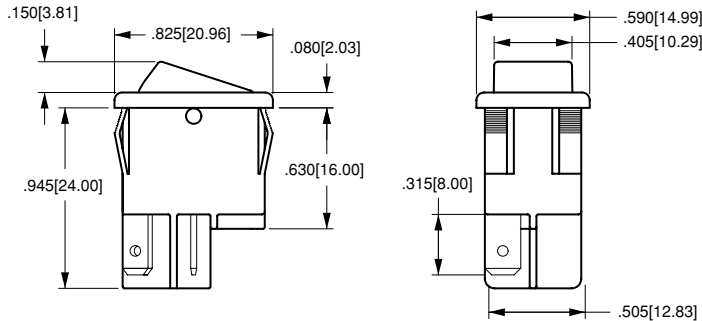
50,000 cycles

Mechanical Life

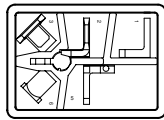
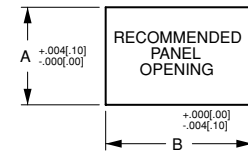
100,000 cycles

Operating Temperature

32°F to 185°F (0°C to 85°C)

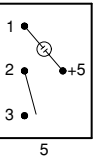
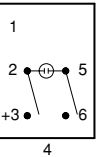
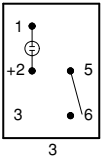
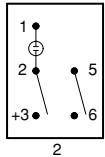
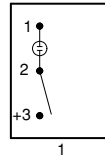


TERMINAL TYPE



BOTTOM VIEW OF TERMINAL ARRANGEMENT

632 SCHEMATIC



UNBALLASTED

PANEL THICKNESS	A	B
.030[.76]-.050[1.27]	.508[12.90]	.756[19.20]
.050[1.27]-.078[1.98]	.508[12.90]	.764[19.40]
.078[1.98]-.125[3.17]	.508[12.90]	.780[19.81]

632121 - 1 B - K N

1 Base Part Number 2 Actuator Color* 3 Base Color 4 Lamp* 5 Legend

1 BASE PART NUMBER: SERIES/CIRCUITRY/RATING*/TERMINATION

8A 250VAC; 12A 125VAC; 1/2 HP 125-250VAC
622-SERIES NON-ILLUMINATED ROCKER

ON-NONE-OFF (Single Pole)
ON-NONE-OFF (Double Pole)

632-SERIES ILLUMINATED ROCKER

ON-NONE-OFF (Single Pole, dependent lamp) schematic 1
ON-NONE-OFF (Single Pole, independent lamp) schematic 3
ON-NONE-OFF (Single Pole, independent lamp unballasted) schematic 5
ON-NONE-OFF (Double Pole, dependent lamp w/ 5 terms.) schematic 2
ON-NONE-OFF (Double Pole, dependent lamp w/ 4 terms.) schematic 4

Solder Lugs	.187 Tabs
622121	622122
622221	622222
632121	632122
632321	632322
632521	632522
632221	632222
632421	632422

2 ACTUATOR COLOR*

622 (non illuminated)

B black
W white

632 (illuminated)

1 clear amber
2 clear red
3 clear blue³
4 clear green
5 clear

3 BASE COLOR*

B black W white

4 LAMP VOLTAGE/STYLE*

N 622 (non illuminated)
1 unballasted LED
2 6V LED
3 12V LED
4 24V LED

A 6V incandescent
C 12V incandescent
E 18V incandescent
H 24V incandescent
J 125V neon
K 250V neon

5 ROCKER LEGEND

NO LEGEND hot stamp
OFF-ON vertical N
OFF-ON horizontal A
I-O horizontal B
I-O vertical D
O on rocker radius E
F

NOTES

- For all incandescent or LED lamps specify 5 in 5th digit of part number. Example 632151-1B-CN
- 10A 250VAC, 16A 125 VAC rating available for select single pole circuits, consult factory for details.
- Available with incandescent lamps only.